

Screenshots for setting up new VM running asm with grid install.

New Virtual Machine Wizard

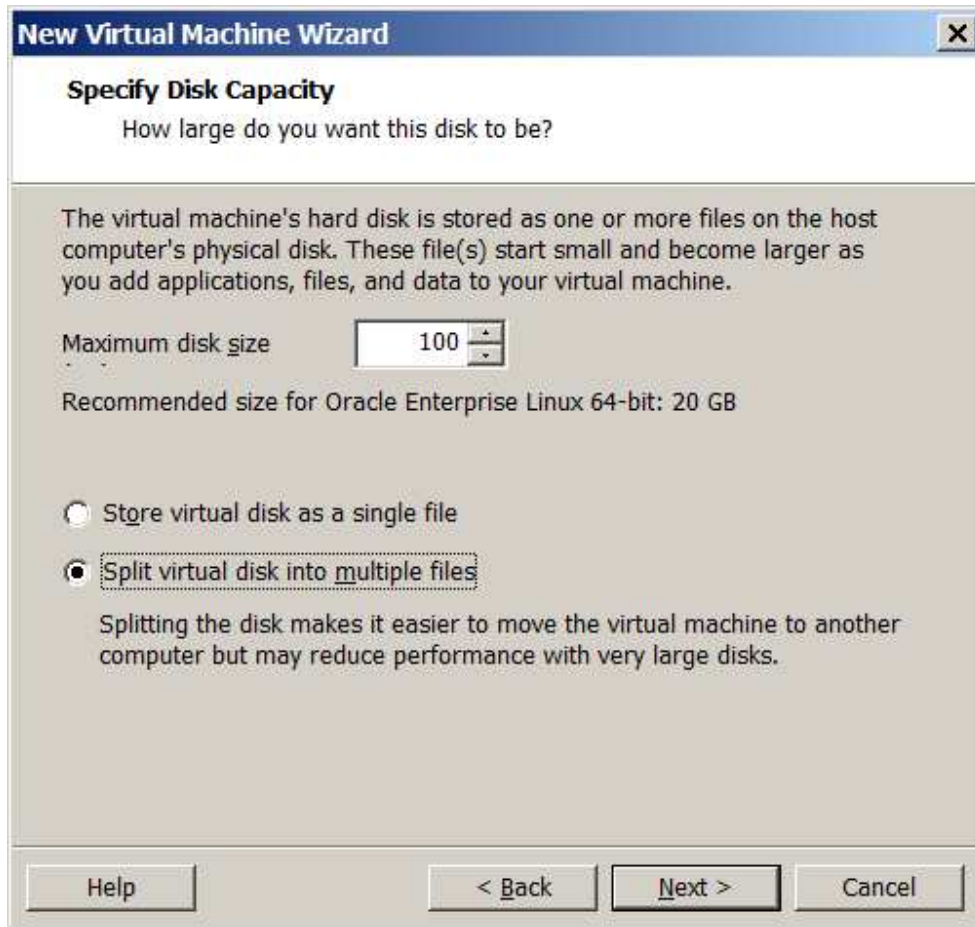
Name the Virtual Machine
What name would you like to use for this virtual machine?

Virtual machine name:
ora12casm

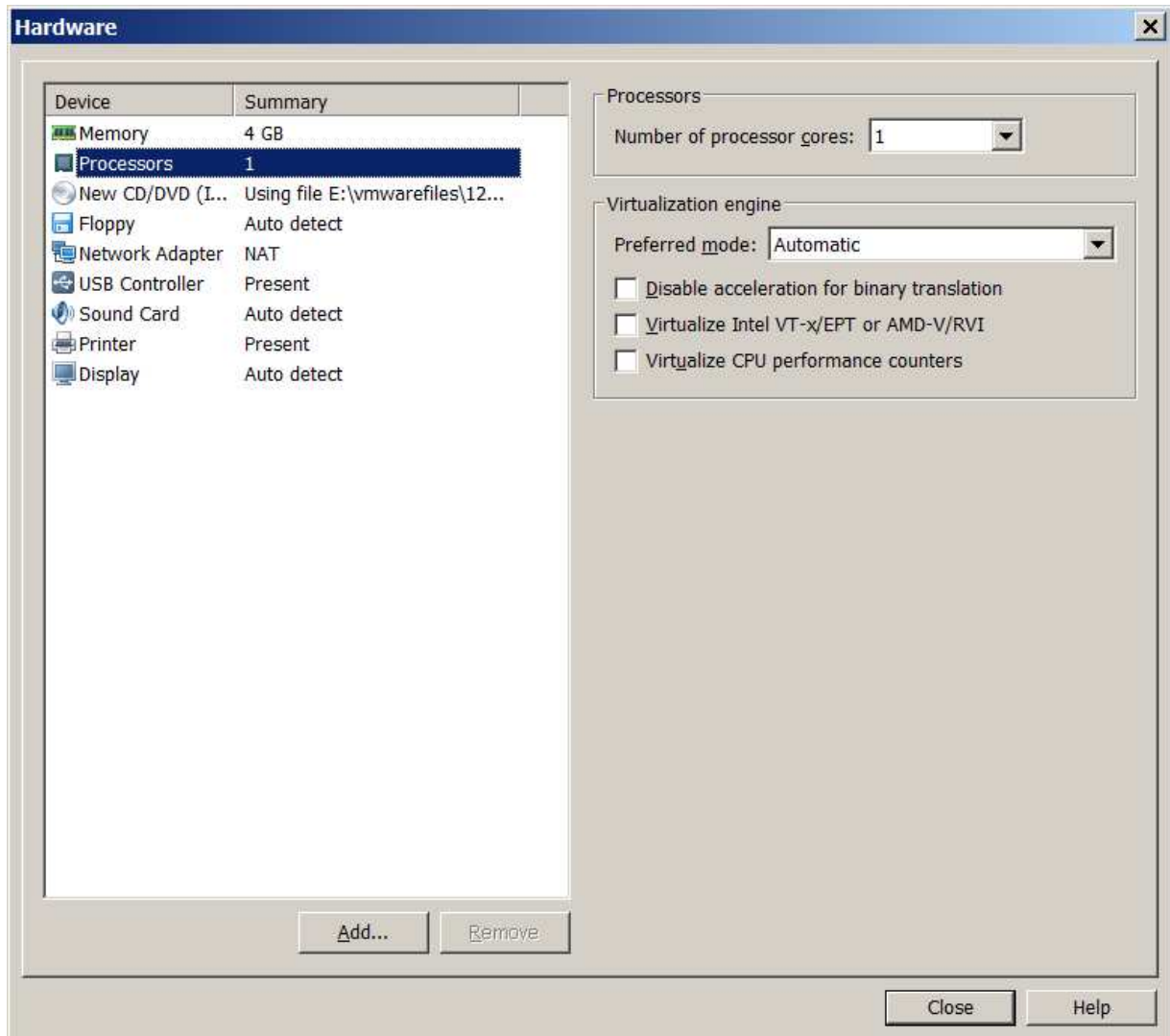
Location:
E:\vmwarefiles\ora12casm

< Back Next > Cancel

E: drive – external drive



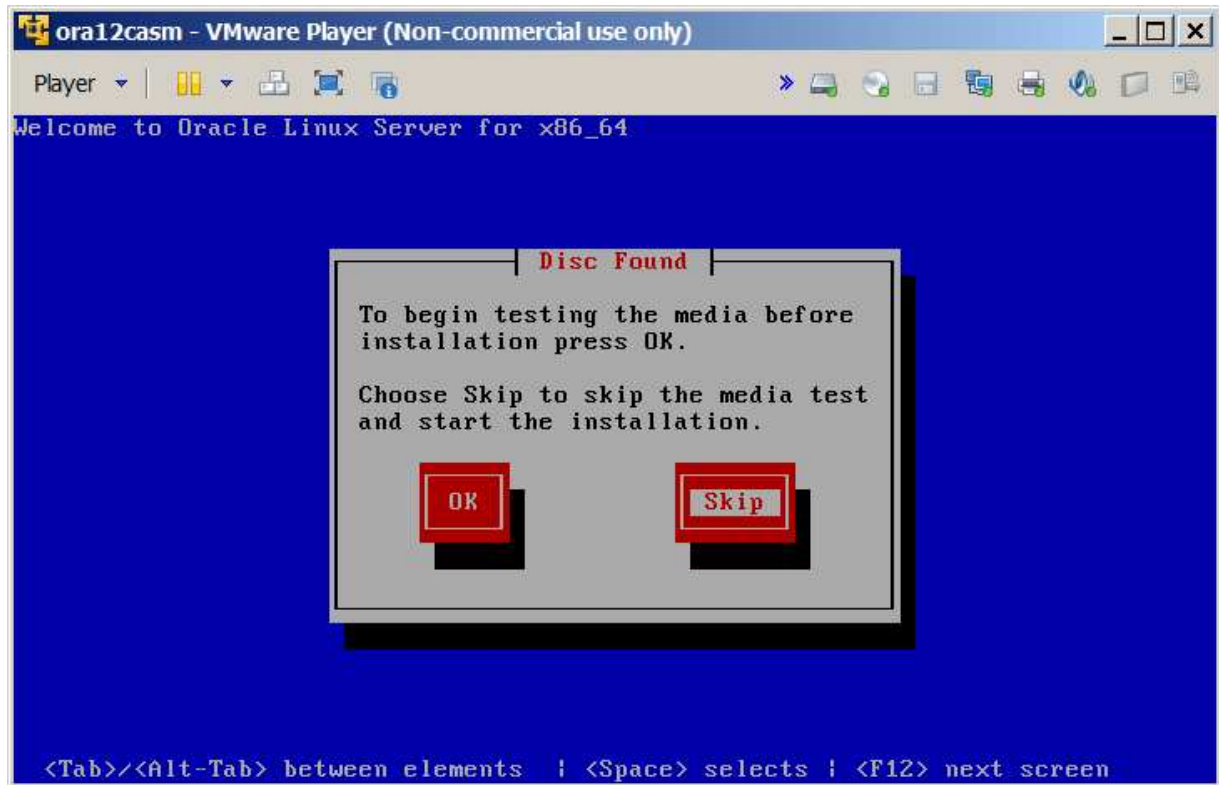
split



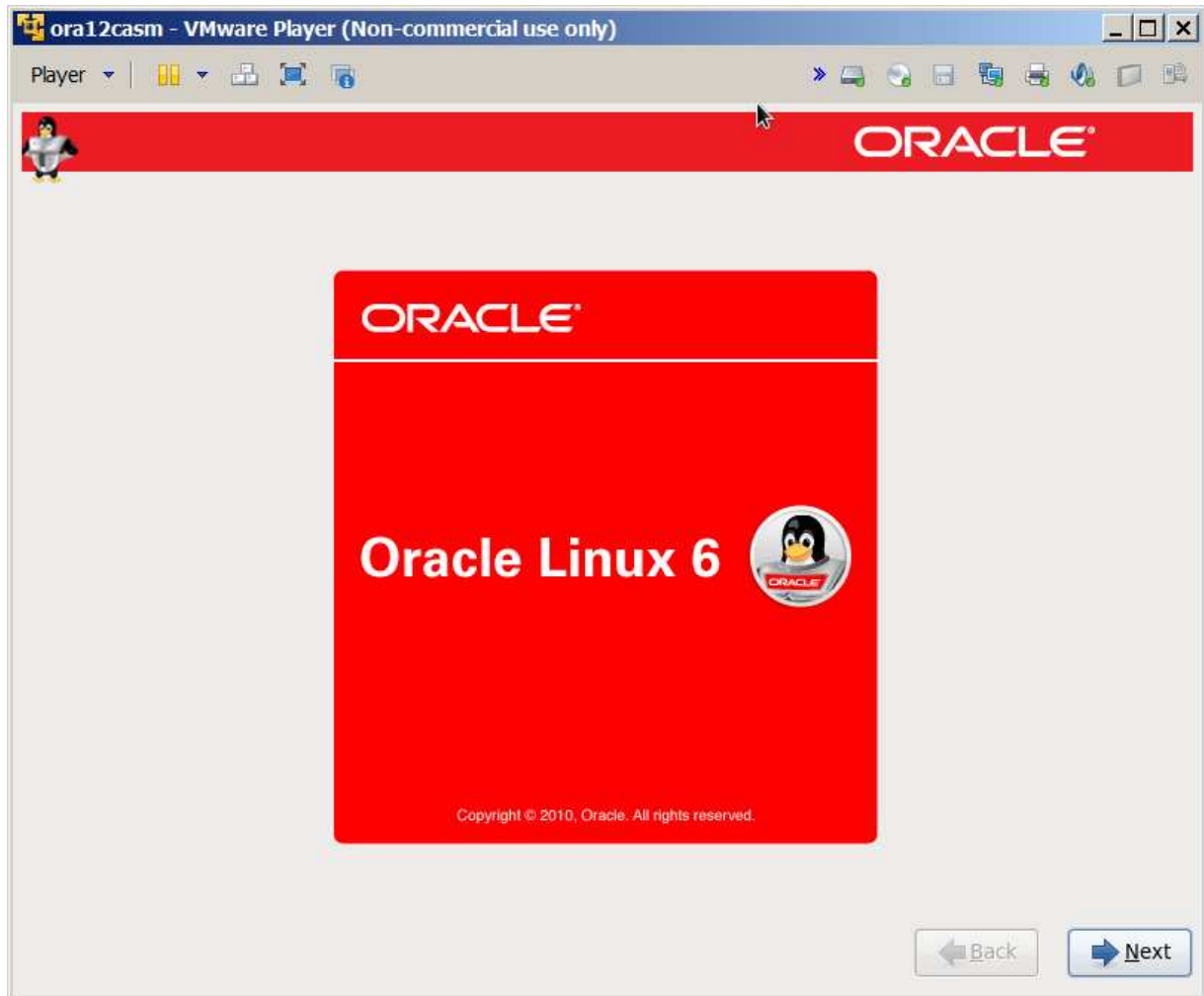
4 gig ram



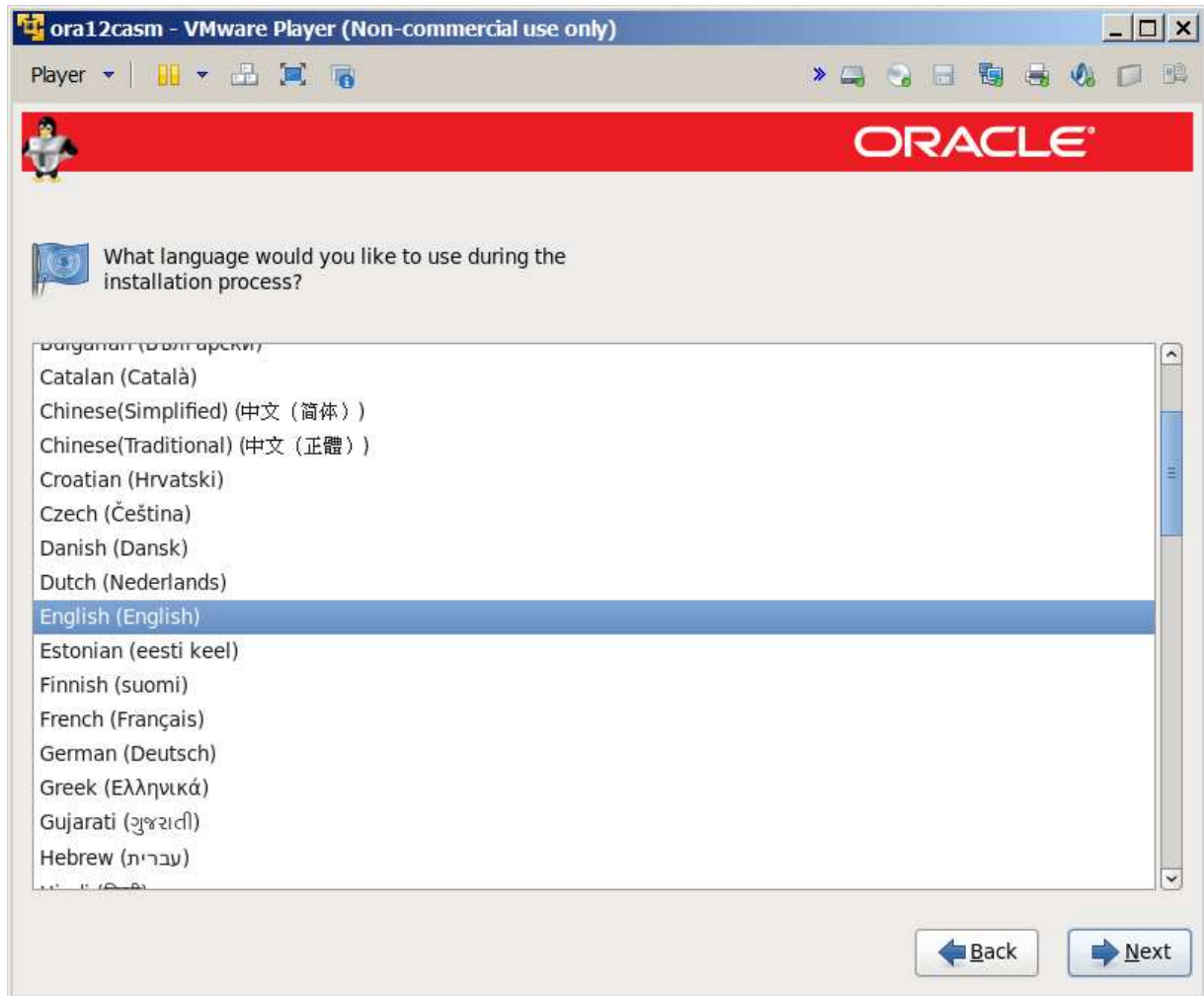
Install screen



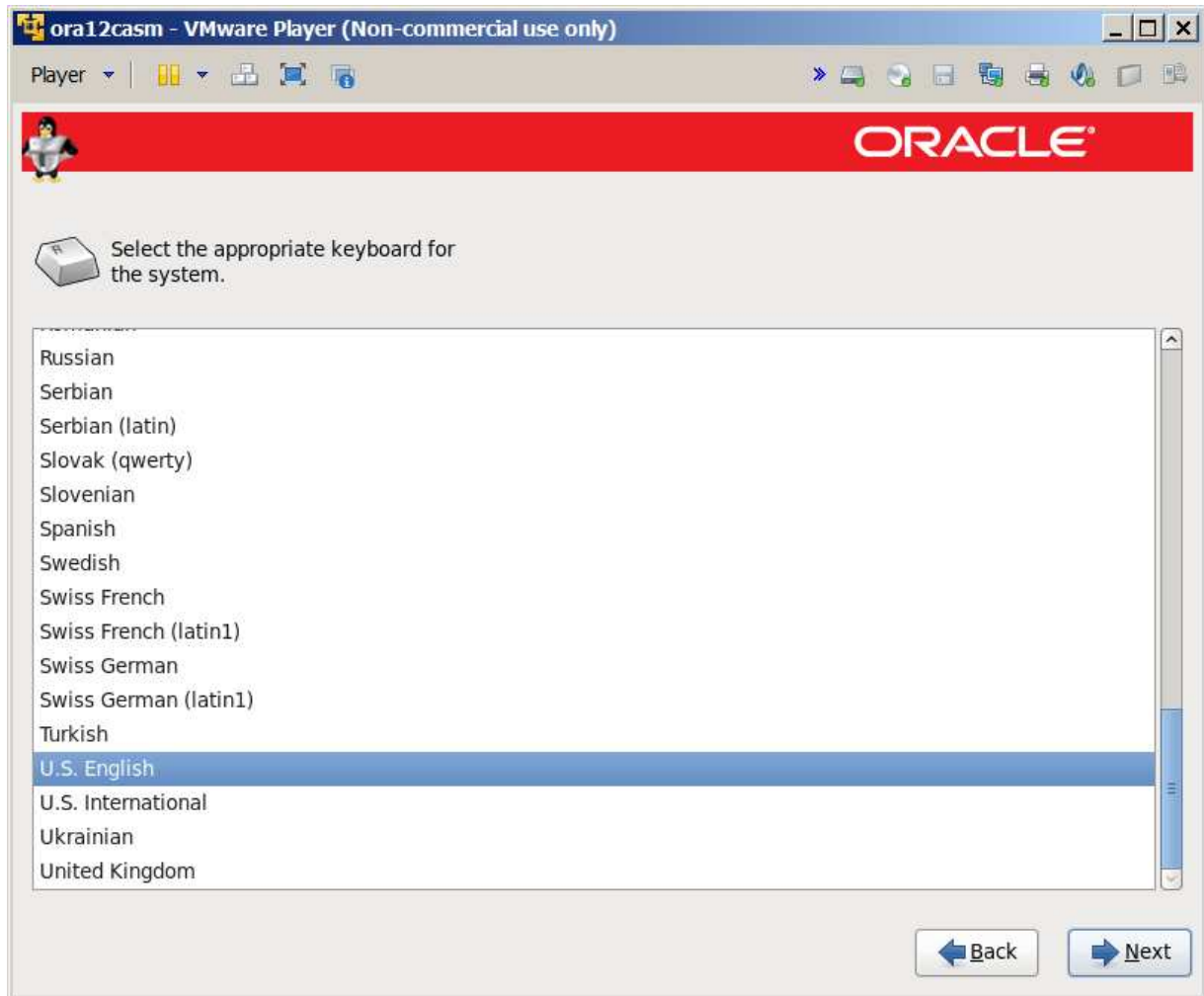
Skip



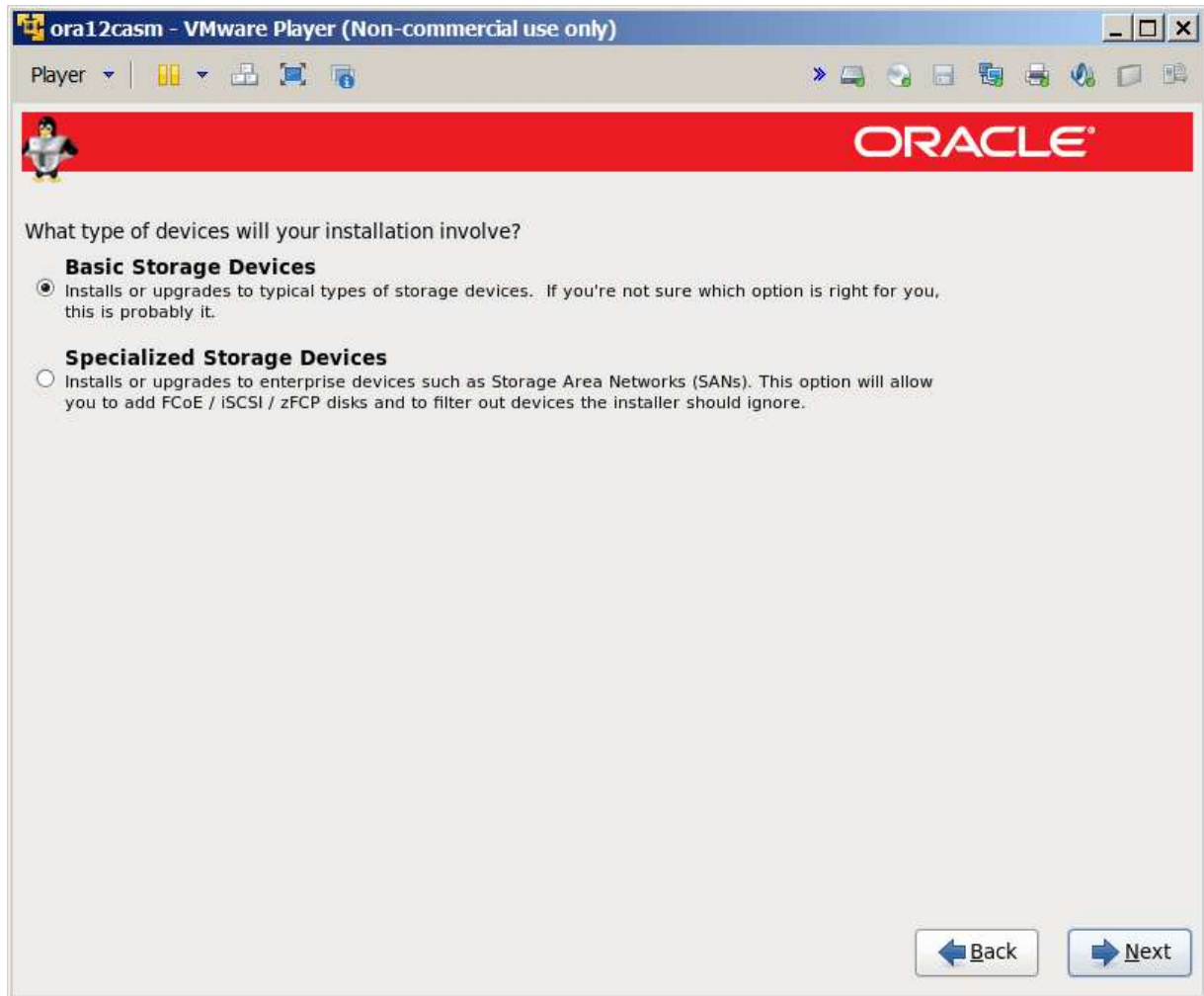
Next



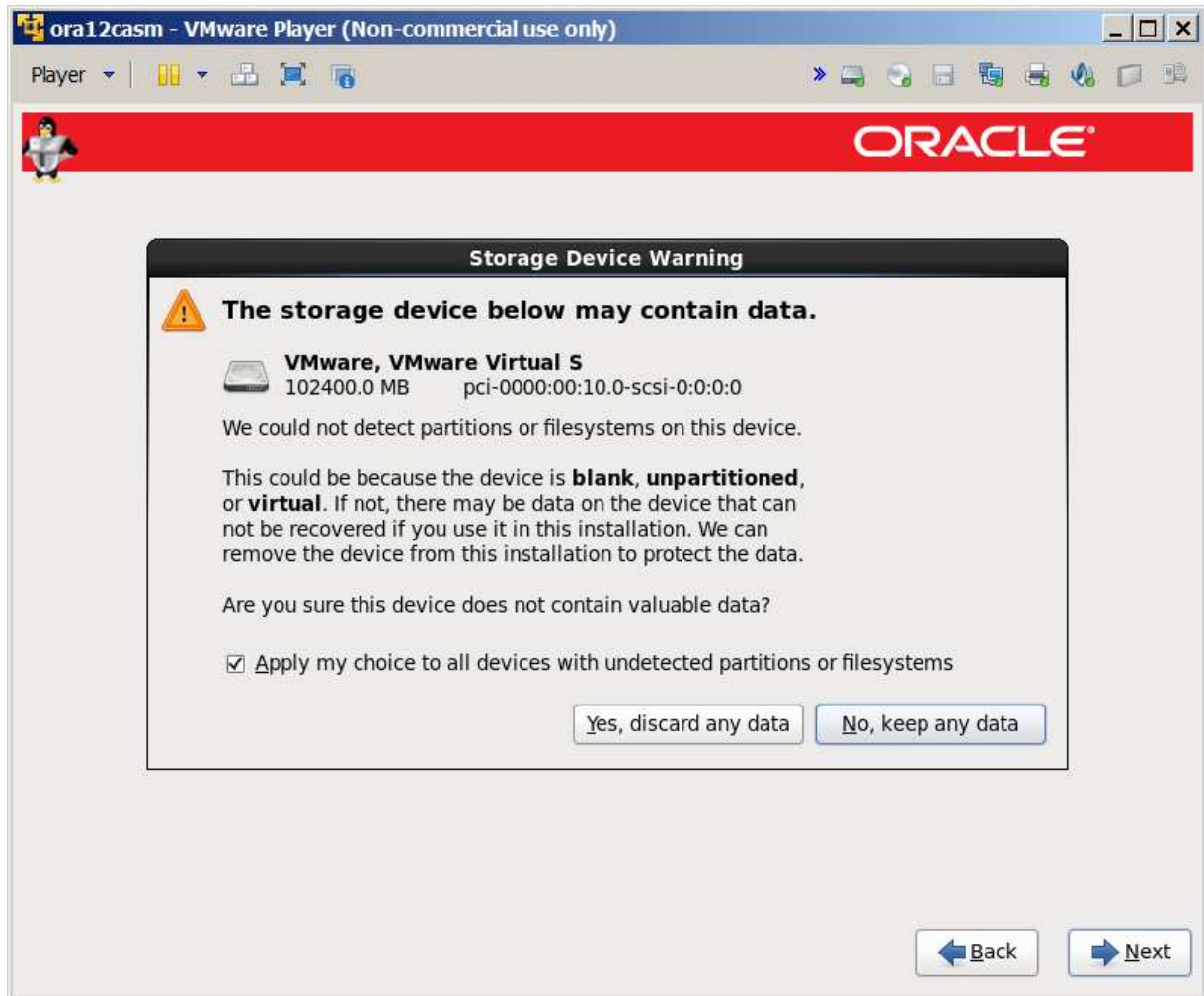
English



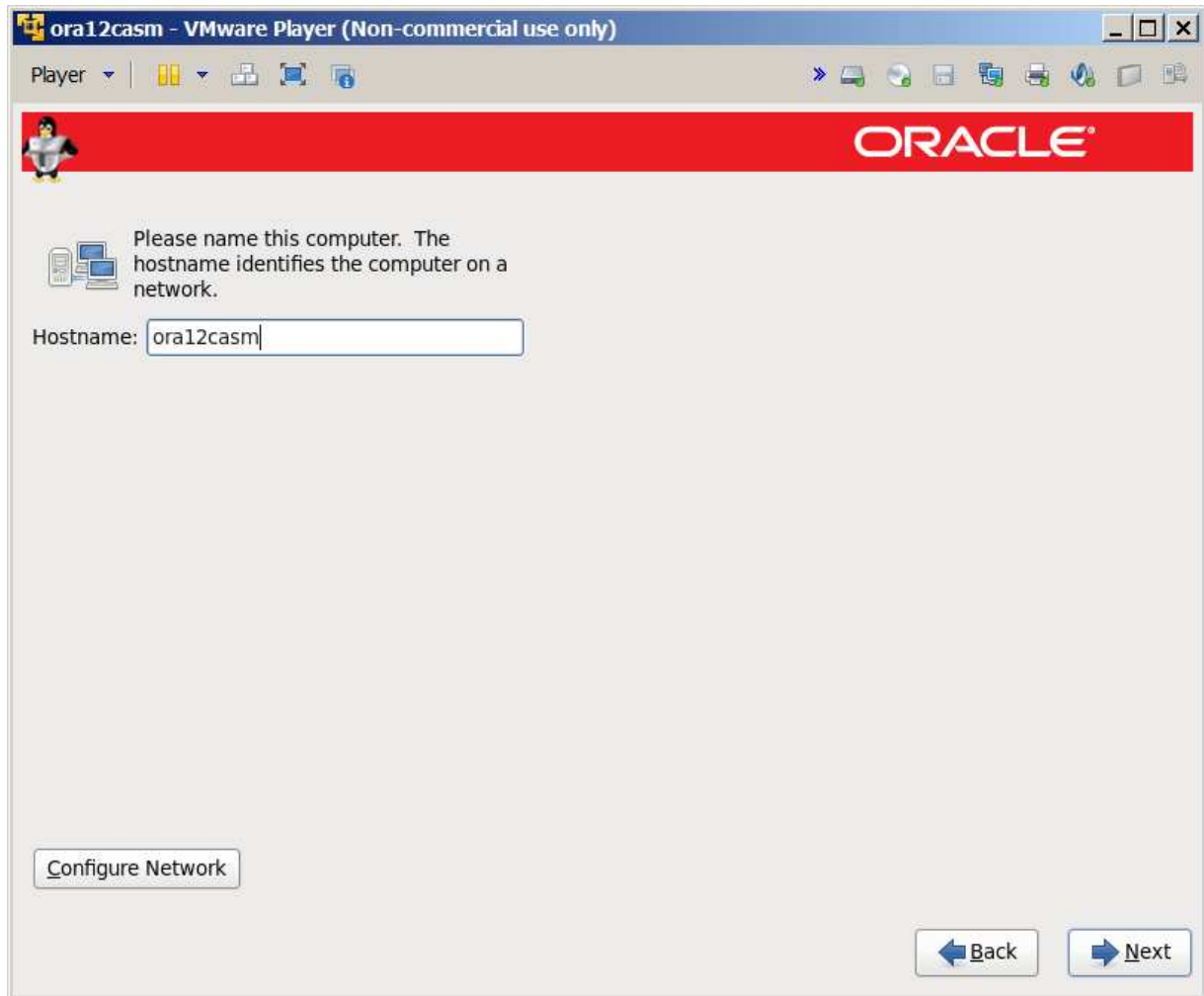
Ditto



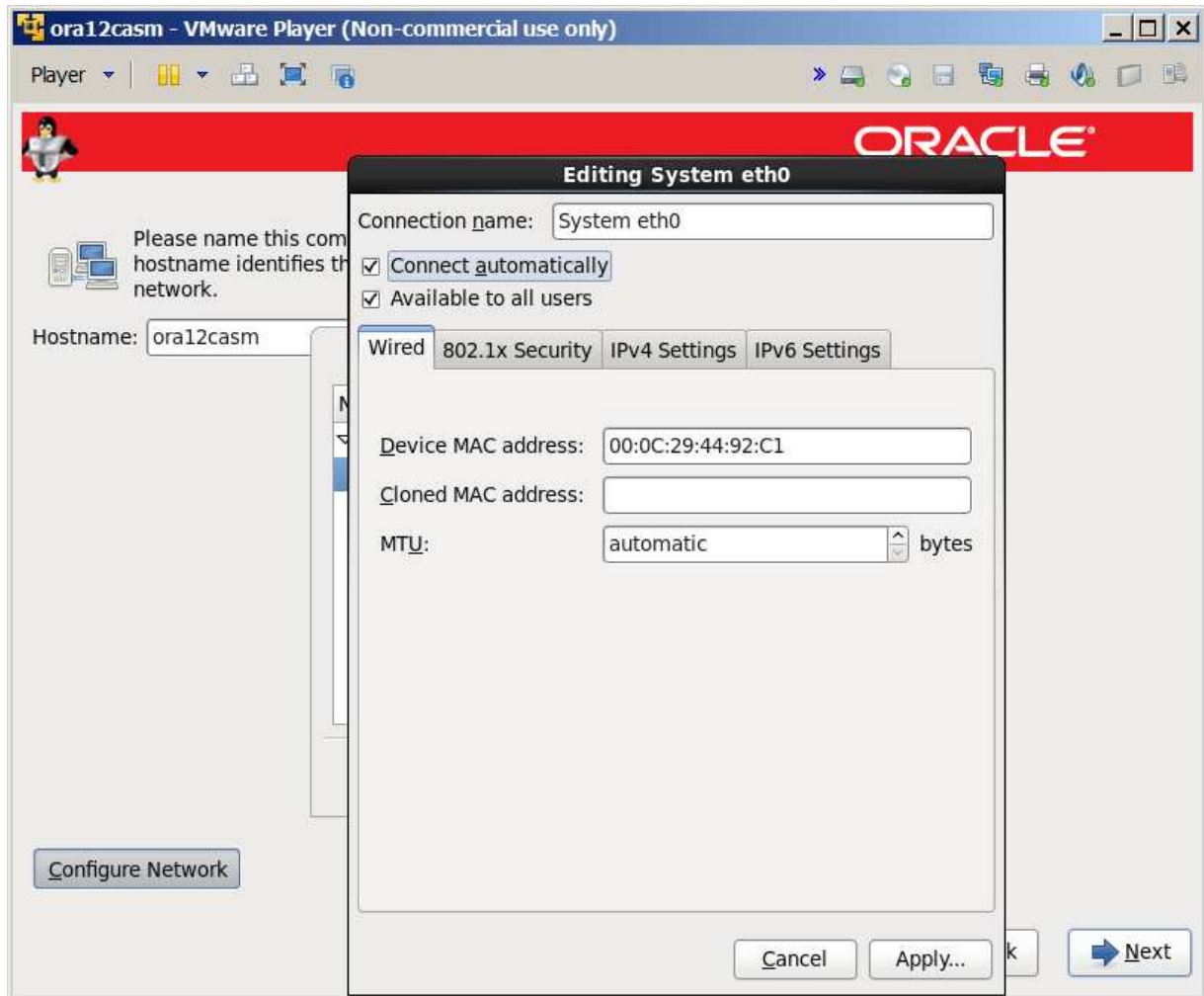
Basic



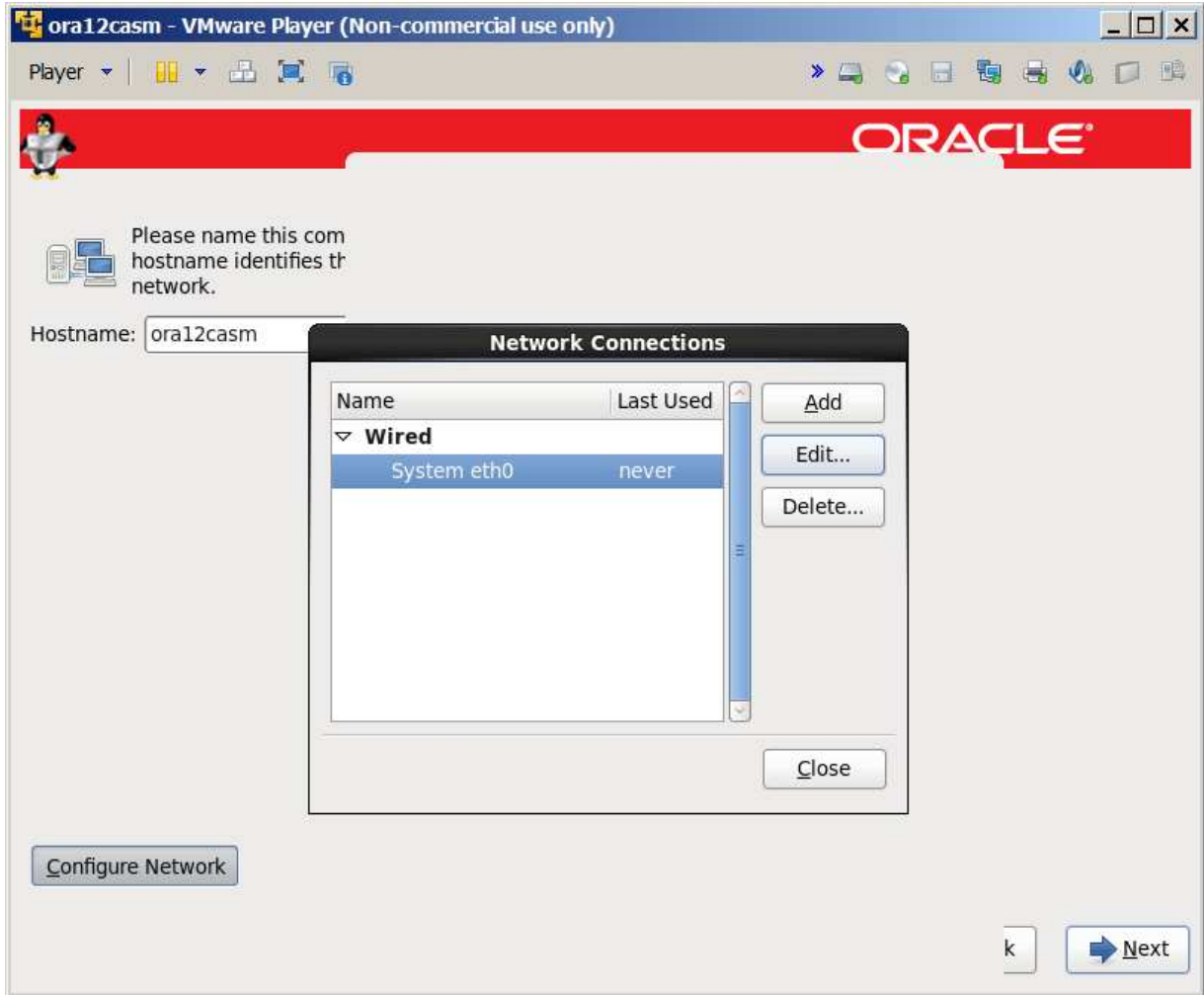
Warning – not an issue since this is a virtual disk.



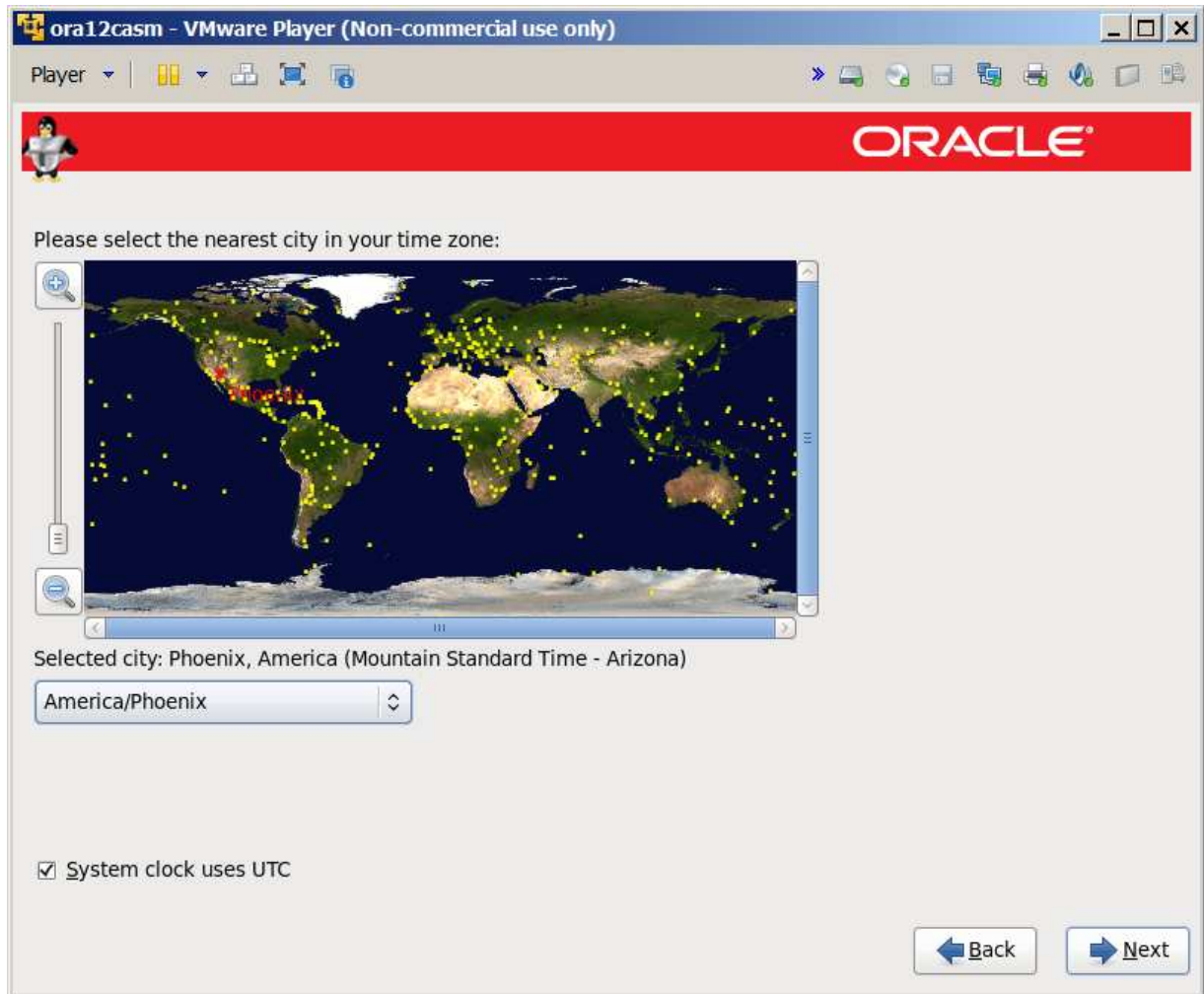
Hostname click configure network to get it to start automatically



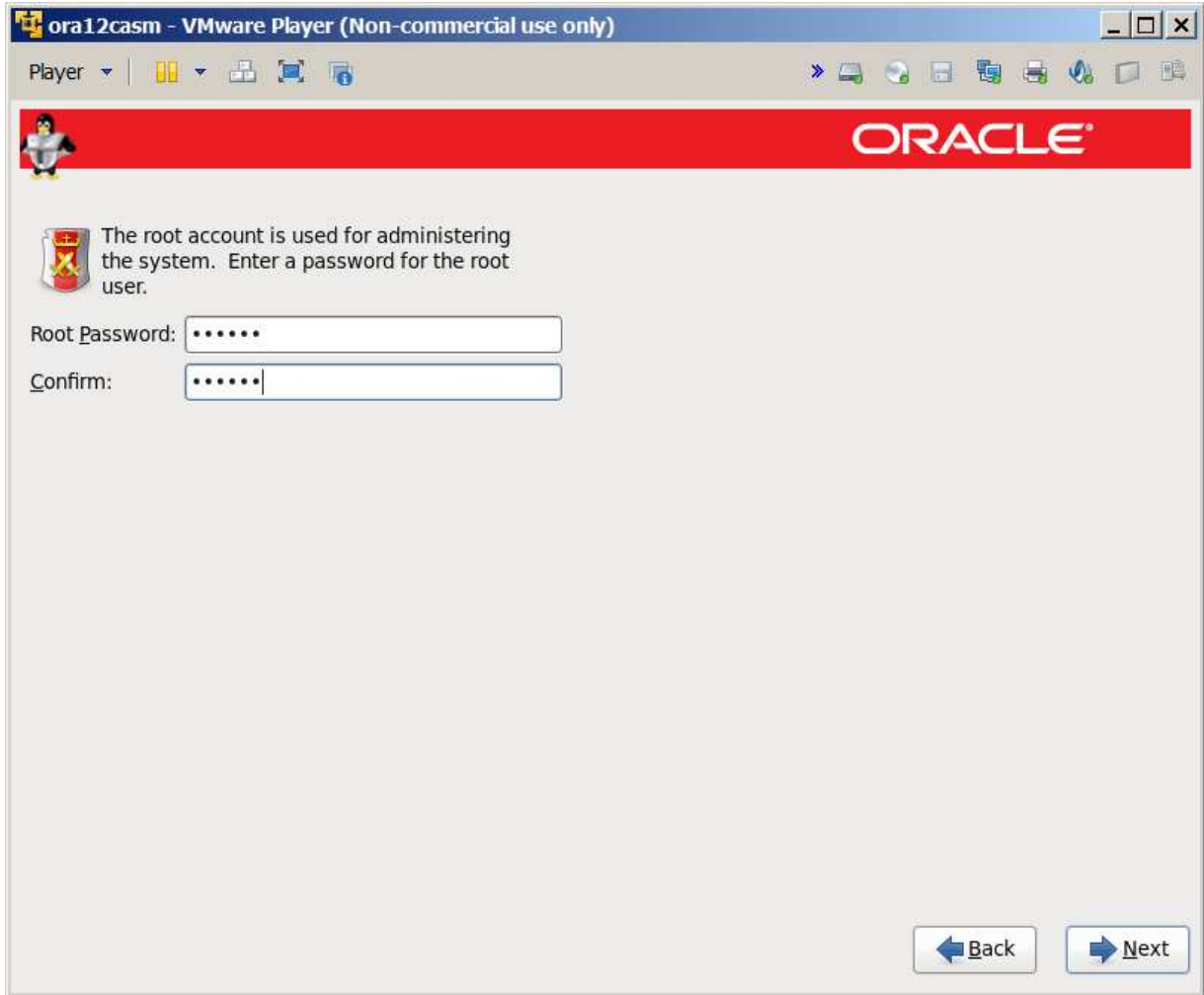
Had to check "Connect automatically"



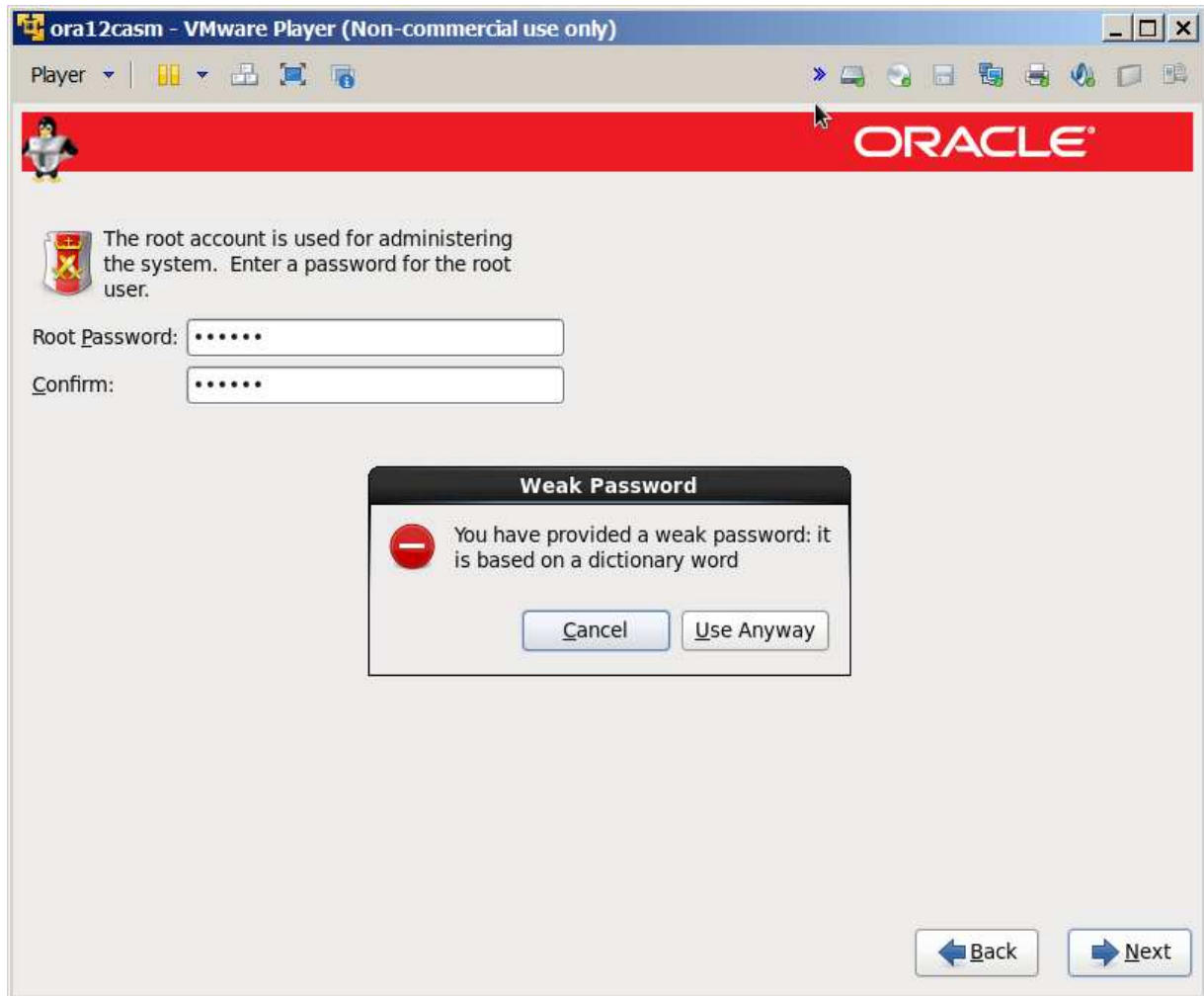
Close



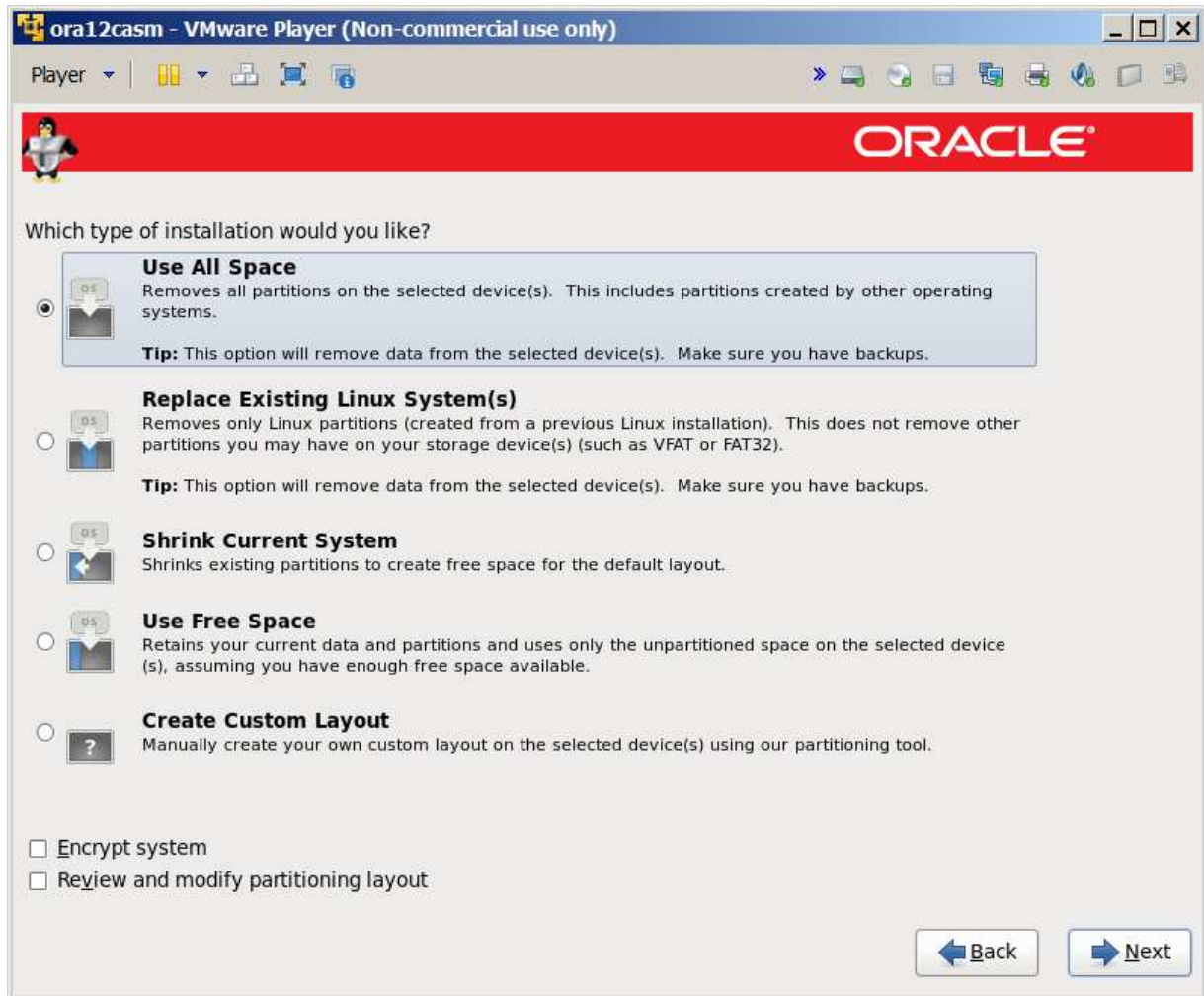
Phoenix for me



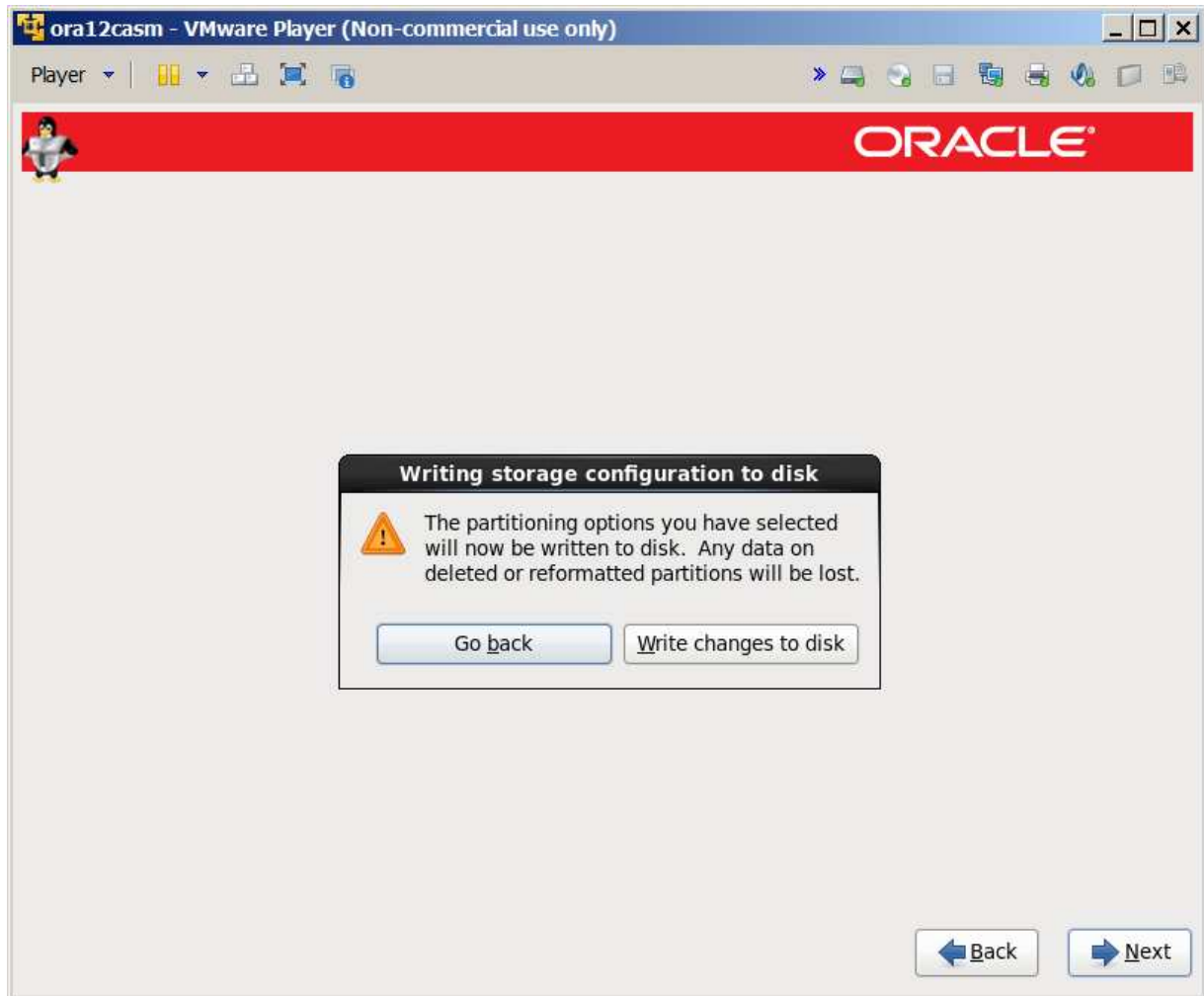
Password



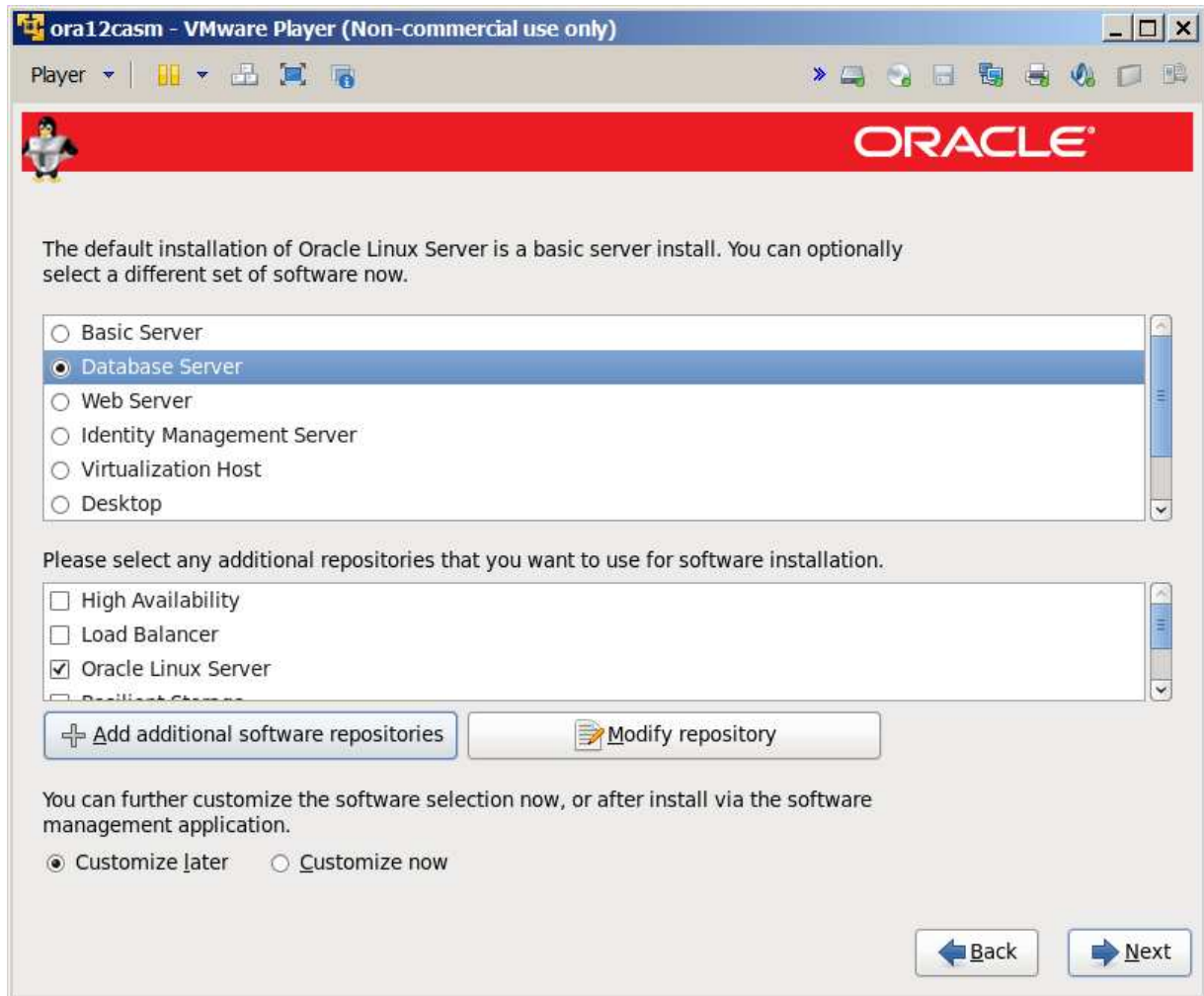
Use anyway



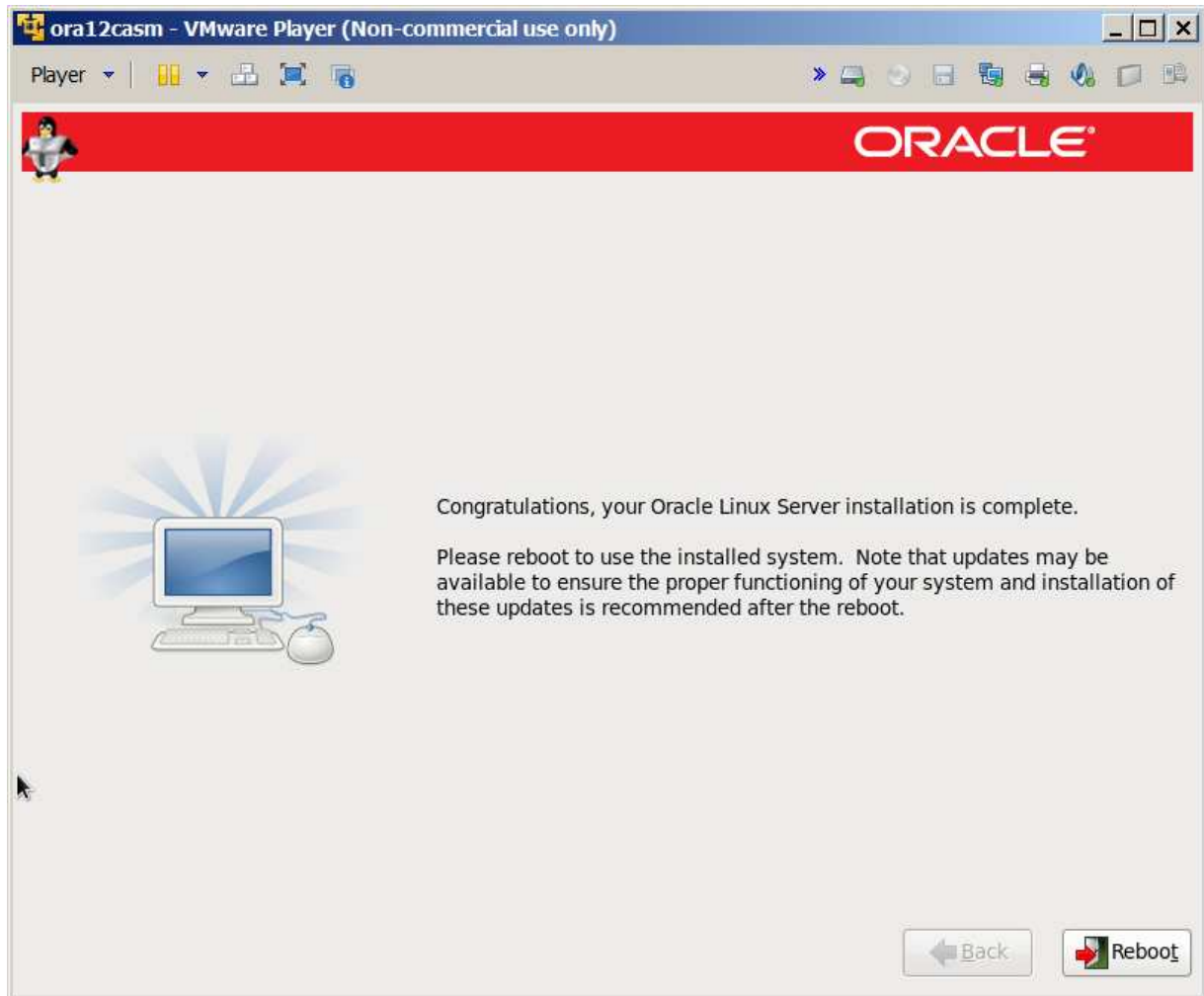
Might as well use all space on virtual disk.



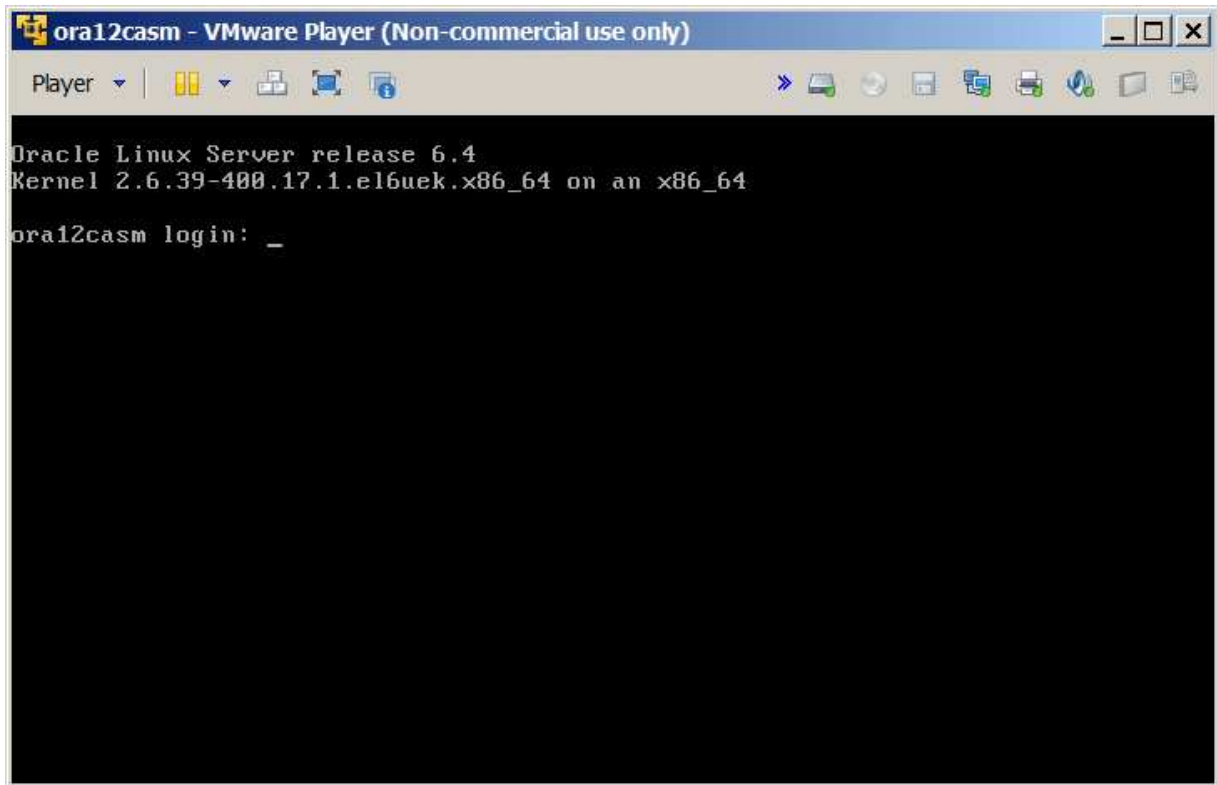
Write to disk



Database server – note that this doesn't have x windows for some reason

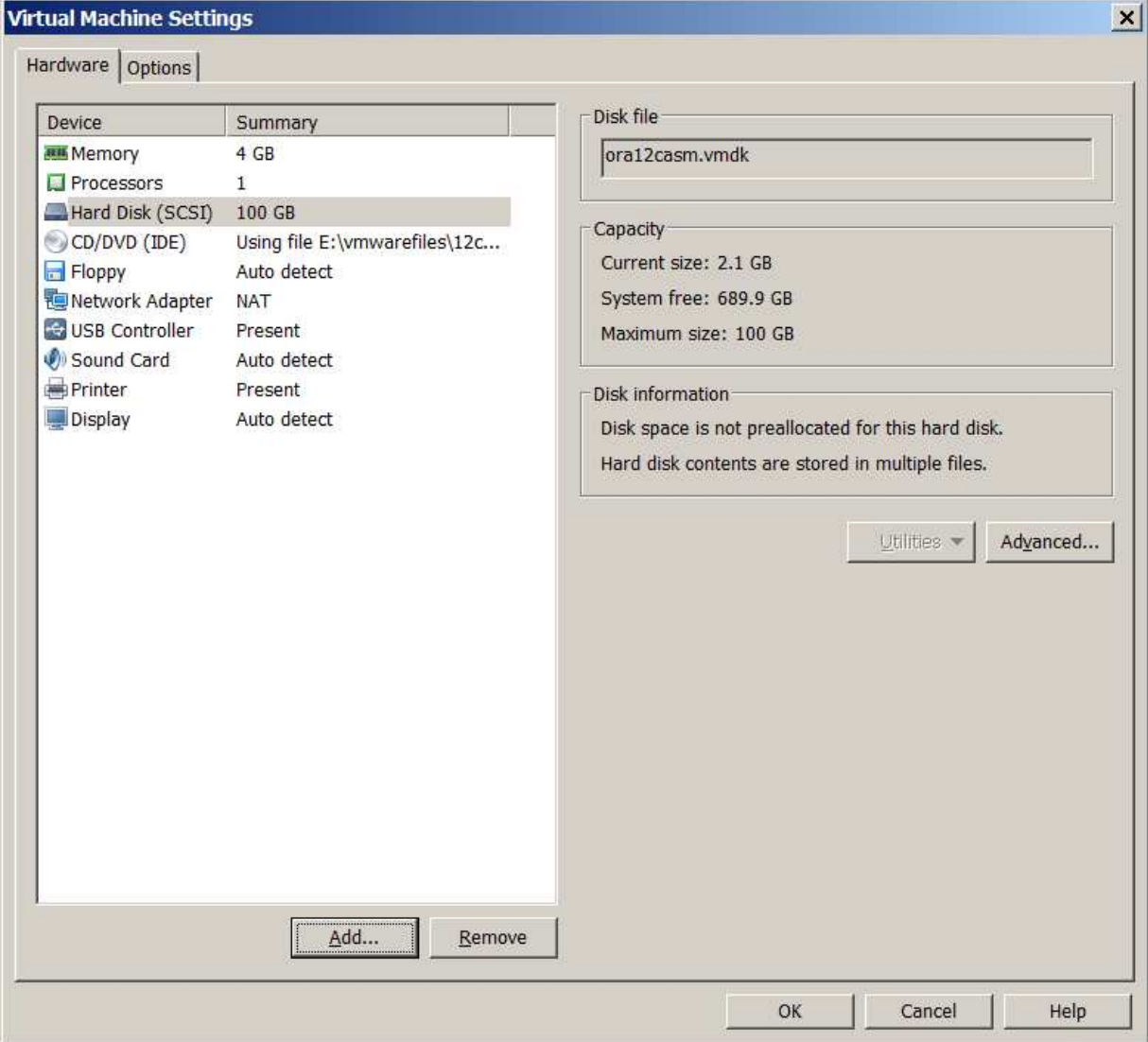


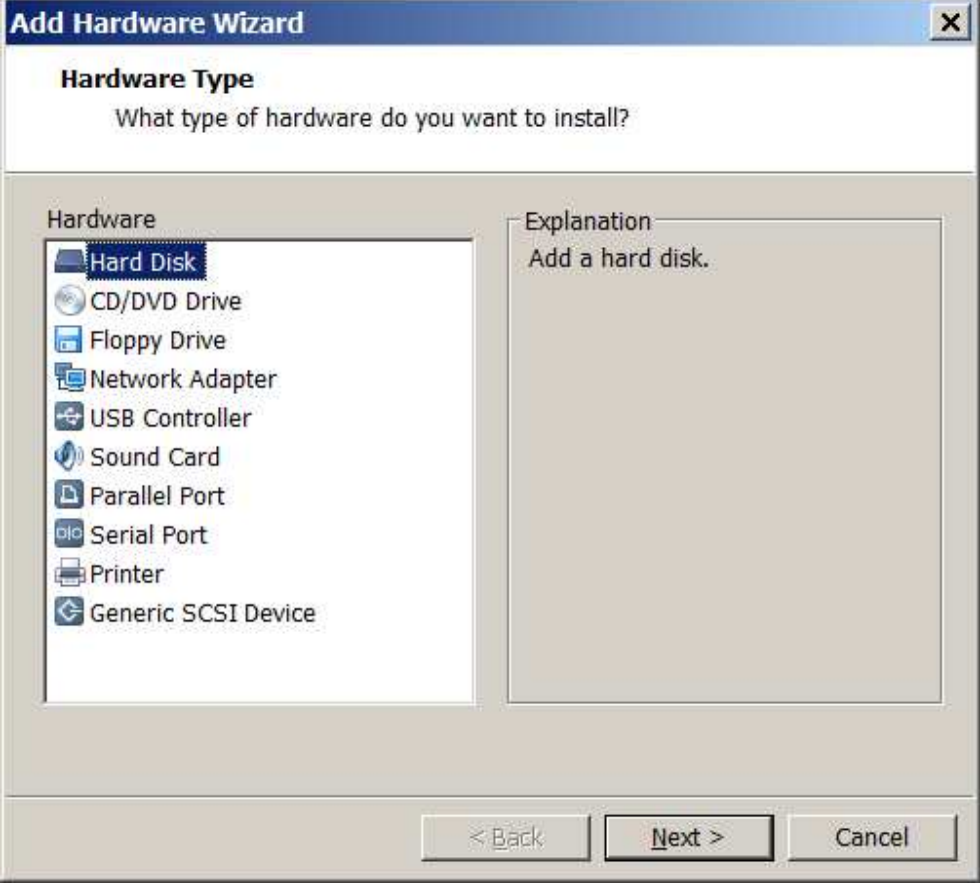
Ready to reboot

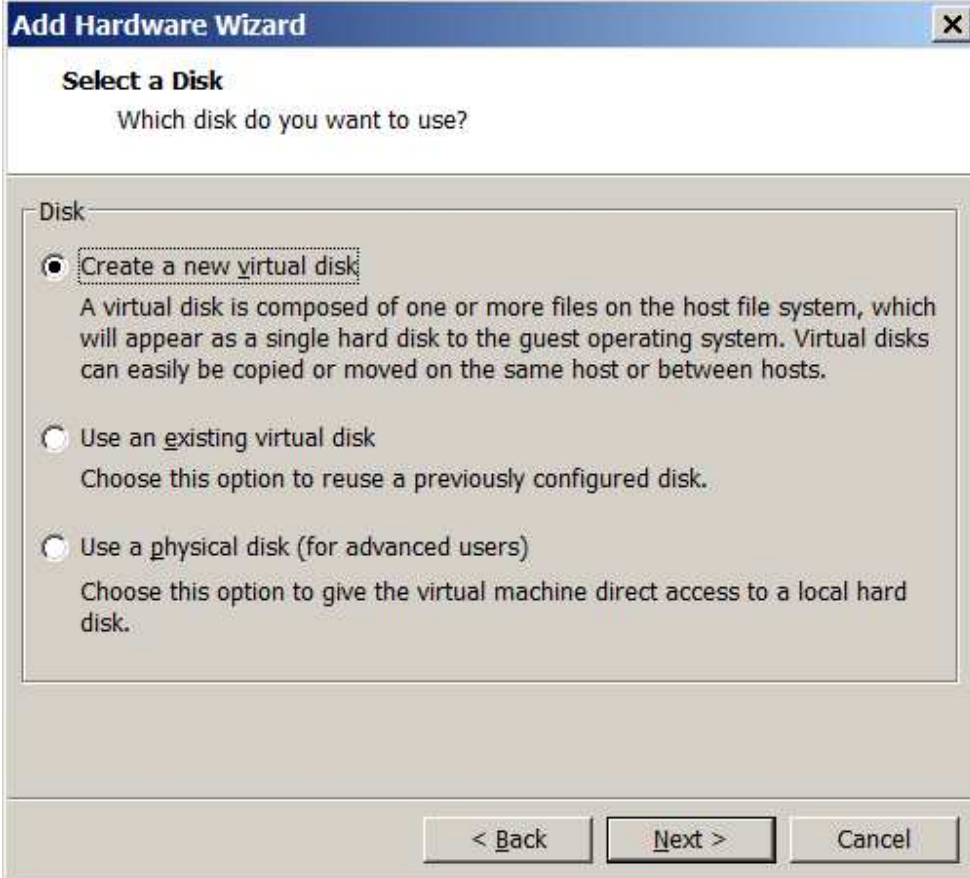


Up with root user only.

Add a couple of disks for ASM to use:







Add Hardware Wizard [X]

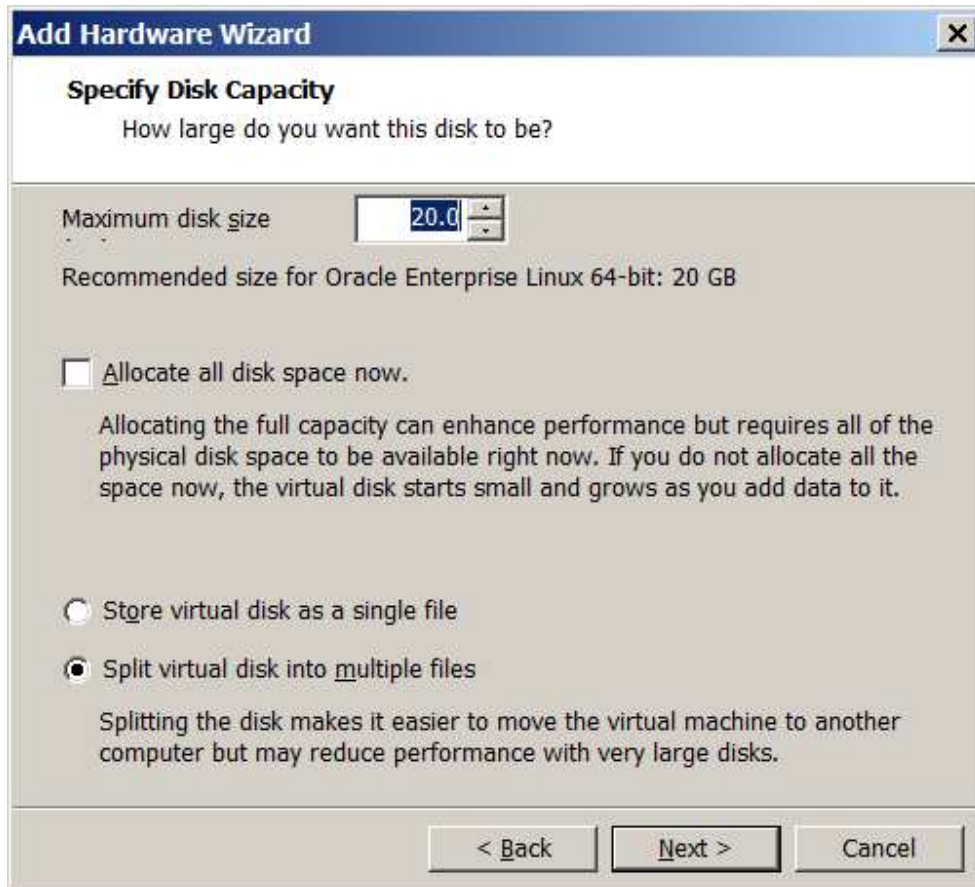
Select a Disk Type
What kind of disk do you want to create?

Virtual disk type

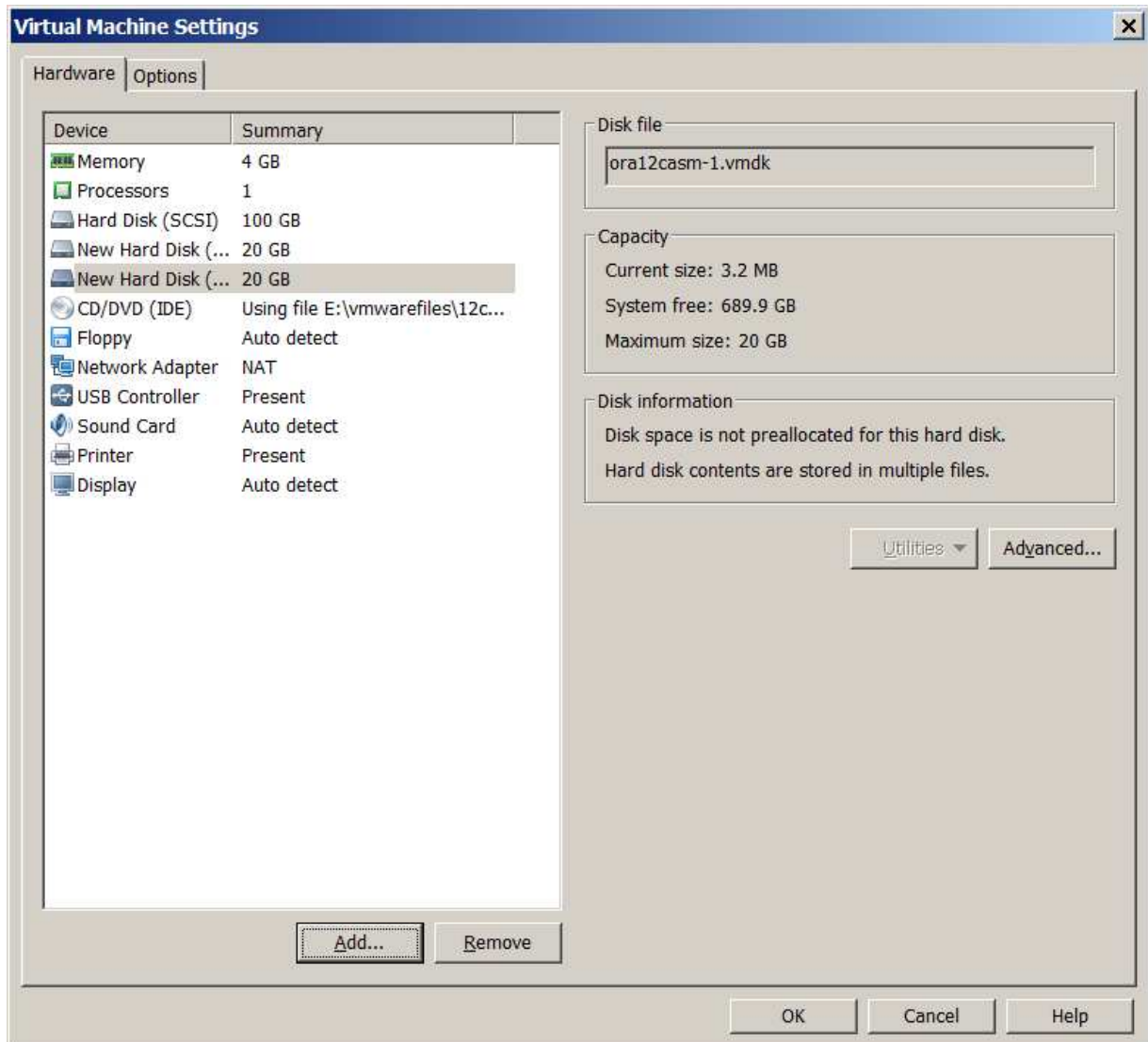
IDE

SCSI (Only SCSI disks can be added while the VM is powered on.)

< Back Next > Cancel



20 gig



2 20 gig disks

```

Oracle Linux Server release 6.4
Kernel 2.6.39-400.17.1.el6uek.x86_64 on an x86_64

ora12casm login: root
Password:
Last login: Tue May 20 03:56:22 on tty1
[root@ora12casm ~]# df
Filesystem            1K-blocks      Used Available Use% Mounted on
/dev/mapper/vg_ora12casm-lv_root
                        51606140      2037880   46946820    5% /
tmpfs                  2025416         0    2025416    0% /dev/shm
/dev/sda1              495844         55642    414602    12% /boot
/dev/mapper/vg_ora12casm-lv_home
                        47098232      184188   44521572    1% /home
[root@ora12casm ~]# cd /dev
[root@ora12casm dev]# ls sd*
sda sda1 sda2 sdb sdc
[root@ora12casm dev]# ls -al sd*
brw-rw----. 1 root disk 8,  0 May 20 04:09 sda
brw-rw----. 1 root disk 8,  1 May 20 04:09 sda1
brw-rw----. 1 root disk 8,  2 May 20 04:09 sda2
brw-rw----. 1 root disk 8, 16 May 20 04:09 sdb
brw-rw----. 1 root disk 8, 32 May 20 04:09 sdc
[root@ora12casm dev]# _

```

I think sdb and sdc are the two new disks.

1. http://docs.oracle.com/cd/E16655_01/install.121/e17720/oraclerestart.htm#CIHCBGCC

standalone grid install

yum install oracleasm-support

/usr/sbin/oracleasm configure -i

/usr/sbin/oracleasm init

/sbin/fdisk -l

fdisk /dev/sdb

/usr/sbin/oracleasm createdisk DISK1 /dev/sdb1

fdisk /dev/sdc

/usr/sbin/oracleasm createdisk DISK2 /dev/sdc1

Disable SELinux:

Edit /etc/selinux/config

- Change the SELINUX value to "**SELINUX=disabled**".
- Reboot the server.

```

root@ora12casm:/dev
# This file controls the state of SELinux on the system.
# SELINUX= can take one of these three values:
#   enforcing - SELinux security policy is enforced.
#   permissive - SELinux prints warnings instead of enforcing.
#   disabled - No SELinux policy is loaded.
SELINUX=disabled
# SELINUXTYPE= can take one of these two values:
#   targeted - Targeted processes are protected,
#   mls - Multi Level Security protection.
SELINUXTYPE=targeted

~/
~/
~/
~/
~/
~/
~/
~/
~/
~/
~/
~/
~/
~/
~/
~/
~/
~/

"/etc/selinux/config" 13L, 457C

```

```

root@ora12casm:~
login as: root
root@192.168.133.137's password:
Last login: Tue May 20 09:03:09 2014
[root@ora12casm ~]# oracleasm createdisk -v DISK1 /dev/sdb1
Disk "DISK1" does not exist or is not instantiated
Writing disk header: done
Instantiating disk: done
[root@ora12casm ~]#
[root@ora12casm ~]# oracleasm createdisk -v DISK2 /dev/sdc1
Disk "DISK2" does not exist or is not instantiated
Writing disk header: done
Instantiating disk: done
[root@ora12casm ~]# oracleasm listdisks
DISK1
DISK2
[root@ora12casm ~]#

```

Se linux was the issue.

Oracle Grid Infrastructure - Setting up Grid Infrastructure - Step 1 of 10

Download Software Updates

Download software updates for this installation. Software updates consist of recommended updates to the installer system requirement checks, PatchSet Updates (PSUs), and other recommended patches.

Select one of the following options:

- Use My Oracle Support credentials for download
 - My Oracle Support user name:
 - My Oracle Support password:
 -
- Use pre-downloaded software updates
 - Location:
- Skip software updates

Oracle Grid Infrastructure - Setting up Grid Infrastructure - Step 2 of 10

ORACLE 12^c
GRID INFRASTRUCTURE

Select Installation Option

- Software Updates
- Installation Option**
- Cluster Type
- Installation Type
- Cluster Configuration
- Install Locations
- Prerequisite Checks
- Summary
- Install Product
- Finish

Install and Configure Oracle Grid Infrastructure for a Cluster

Install and Configure Oracle Grid Infrastructure for a Standalone Server

Upgrade Oracle Grid Infrastructure or Oracle Automatic Storage Management

Install Oracle Grid Infrastructure Software Only

Help < Back Next > Install Cancel

Select Product Languages

- Software Updates
- Installation Option
- Product Languages**
- Operating System Groups
- Installation Location
- Root-script execution
- Prerequisite Checks
- Summary
- Install Product
- Finish

Select the languages in which your product will run.

Available languages:

- Arabic
- Bengali
- Brazilian Portuguese
- Bulgarian
- Canadian French
- Catalan
- Croatian
- Czech
- Danish
- Dutch
- Egyptian
- English (United Kingdom)
- Estonian
- Finnish
- French
- German
- Greek
- Hebrew
- Hungarian
- Icelandic
- Indonesian
- Italian
- Japanese

Selected languages:

- English



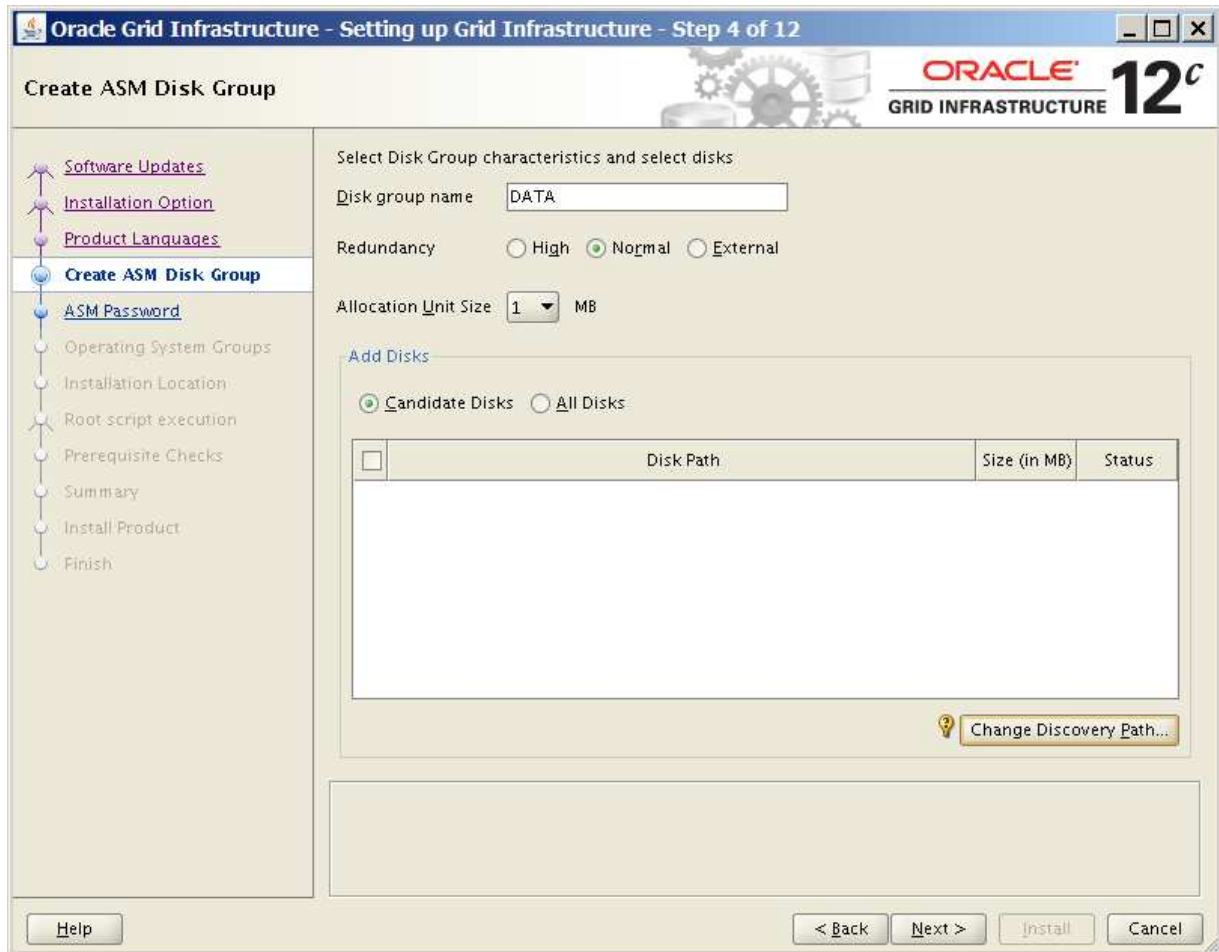
Help

< Back

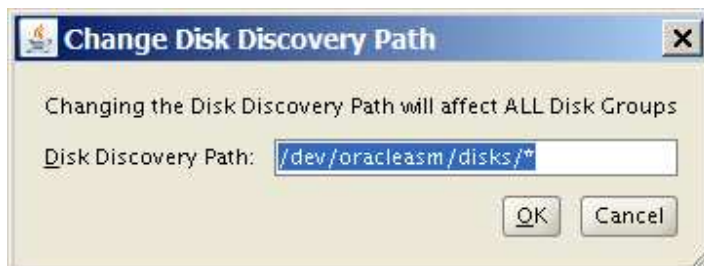
Next >

Install

Cancel



Not seeing the disks we setup in asmlib



Create ASM Disk Group

- Software Updates
- Installation Option
- Product Languages
- Create ASM Disk Group**
- ASM Password
- Operating System Groups
- Installation Location
- Root script execution
- Prerequisite Checks
- Summary
- Install Product
- Finish

Select Disk Group characteristics and select disks

Disk group name

Redundancy High Normal External

Allocation Unit Size MB

Add Disks

Candidate Disks All Disks

<input type="checkbox"/>	Disk Path ▲	Size (in MB)	Status
<input checked="" type="checkbox"/>	/dev/oracleasm/disks/DISK1	20473	Candidate
<input checked="" type="checkbox"/>	/dev/oracleasm/disks/DISK2	20473	Candidate

Oracle Grid Infrastructure - Setting up Grid Infrastructure - Step 5 of 12

Specify ASM Password

The new Oracle Automatic Storage Management (Oracle ASM) instance requires its own SYS user with SYSASM privileges for administration. Oracle recommends that you create a less privileged ASMSNMP user with SYSDBA privileges to monitor the ASM instance.

Specify the password for these user accounts.


Use different passwords for these accounts

	Password	Confirm Password
SYS		
ASMSNMP		

Use game passwords for these accounts

Specify Password: Confirm Password:

Messages:

 Specify Password:[INS-30011] The password entered does not conform to the Oracle recommended standards.

Help < Back Next > Install Cancel

Oracle Grid Infrastructure



[INS-30011] The SYS password entered does not conform to the Oracle recommended standards.

[INS-30011] The ASMSNMP password entered does not conform to the Oracle recommended standards.

Are you sure you want to continue?

Yes No Details

Oracle Grid Infrastructure - Setting up Grid Infrastructure - Step 6 of 12


Privileged Operating System Groups

Select the name of the operating system group, that you want to use for operating system authentication to Oracle Automatic Storage Management.

Oracle ASM Administrator (OSASM) Group	dba
Oracle ASM_DB A (OSDBA for ASM) Group	oinstall
Oracle ASM Operator (OSOPER for ASM) Group (Optional)	

Help < Back Next > Install Cancel

Oracle Grid Infrastructure



[INS-41808] Possible invalid choice for OSASM Group.

Are you sure you want to continue ?

Yes No Details

Oracle Grid Infrastructure - Setting up Grid Infrastructure - Step 7 of 12

Specify Installation Location

ORACLE 12c
GRID INFRASTRUCTURE

- Software Updates
- Installation Option
- Product Languages
- Create ASM Disk Group
- ASM Password
- Operating System Groups
- Installation Location**
- Root script execution
- Prerequisite Checks
- Summary
- Install Product
- Finish

Specify a base location for storing all Oracle software and configuration-related files. This location is the Oracle base directory. Create one Oracle base for each operating system user. By default, software and configuration files are installed by version and database name in the Oracle base directory.

Oracle base: /u01/app/oracle

Specify a location for storing Oracle software files separate from configuration files in the Oracle base directory. This software directory is the Oracle Grid Infrastructure home directory.

Software location: /u01/app/oracle/product/12.1.0/grid

Oracle Grid Infrastructure - Setting up Grid Infrastructure - Step 8 of 13

ORACLE 12^c
GRID INFRASTRUCTURE

Create Inventory

- Software Updates
- Installation Option
- Product Languages
- Create ASM Disk Group
- ASM Password**
- Operating System Groups
- Installation Location
- Create Inventory**
- Root script execution
- Prerequisite Checks
- Summary
- Install Product
- Finish

You are starting your first installation on this host. Specify a directory for installation metadata files (for example, install log files). This directory is called the "inventory directory". The installer automatically sets up subdirectories for each product to contain inventory data. The subdirectory for each product typically requires 150 kilobytes of disk space.

Inventory Directory:

Members of the following operating system group (the primary group) will have write permission to the inventory directory (orainventory).

orainventory Group Name: oinstall



Root script execution configuration

- [Software Updates](#)
- [Installation Option](#)
- [Product Languages](#)
- [Create ASM Disk Group](#)
- [ASM Password](#)
- [Operating System Groups](#)
- [Installation Location](#)
- [Create Inventory](#)
- [Root script execution](#)**
- [Prerequisite Checks](#)
- [Summary](#)
- [Install Product](#)
- [Finish](#)

While configuring the software, certain operations have to be performed as "root" user. You can choose to have the Installer perform these operations automatically by specifying inputs for one of the options below.

Automatically run configuration scripts

Use "root" user **g**redential

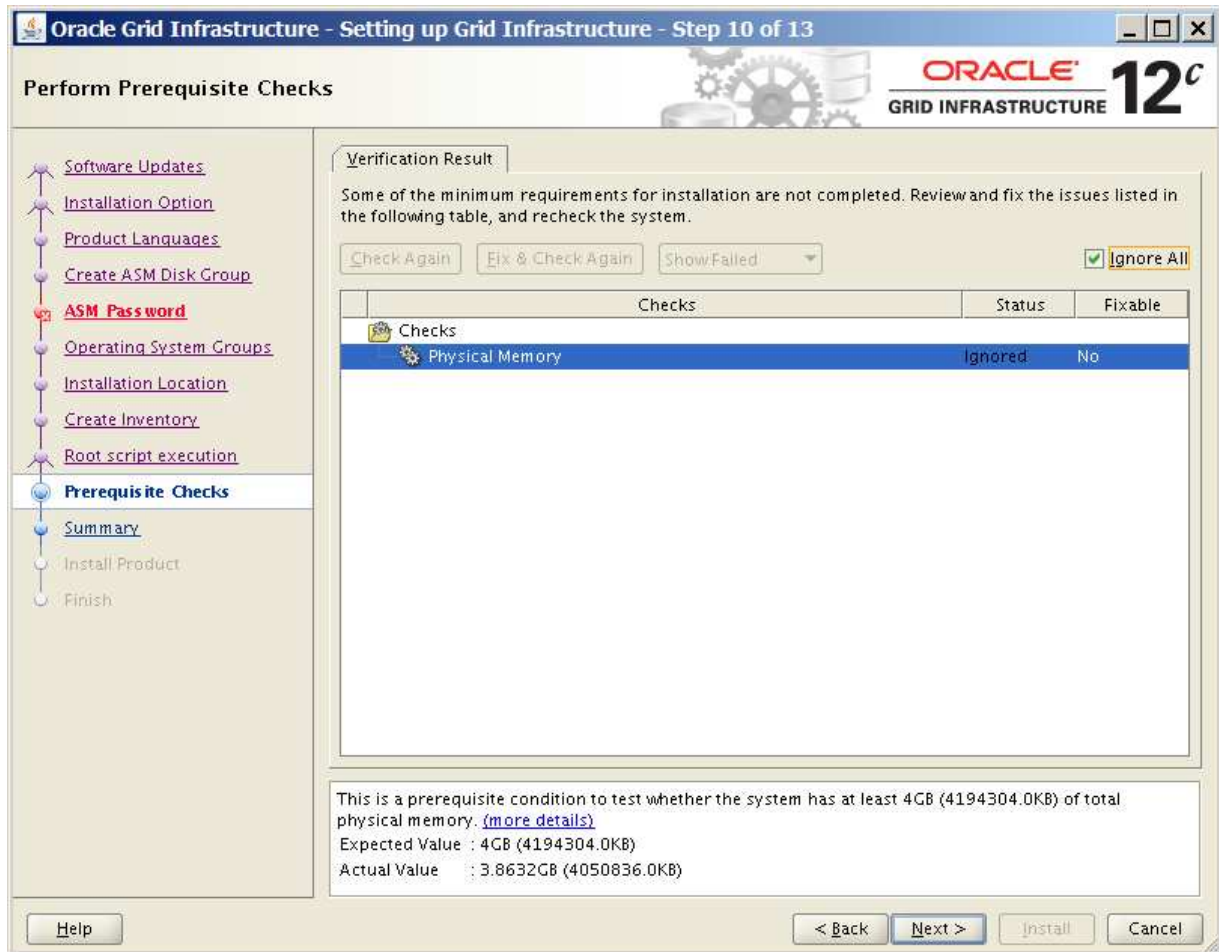
 Password :

Use **g**udo

 Program path :

 User name :

 Passwgrd :



Fails memory check.



Notice how shutdown works:

```
Shutting down...Stopping cer[ OK ]
Stopping atd: [ OK ]
Stopping cups: [ OK ]
Stopping Oracle Clusterware stack
CRS-2791: Starting shutdown of Oracle High Availability Services-managed resources on 'ora12casm'
CRS-2673: Attempting to stop 'ora.DATA.dg' on 'ora12casm'
CRS-2673: Attempting to stop 'ora.LISTENER.lsnr' on 'ora12casm'
CRS-2677: Stop of 'ora.LISTENER.lsnr' on 'ora12casm' succeeded
CRS-2677: Stop of 'ora.DATA.dg' on 'ora12casm' succeeded
CRS-2673: Attempting to stop 'ora.evmd' on 'ora12casm'
CRS-2673: Attempting to stop 'ora.asm' on 'ora12casm'
CRS-2677: Stop of 'ora.evmd' on 'ora12casm' succeeded
CRS-2677: Stop of 'ora.asm' on 'ora12casm' succeeded
CRS-2673: Attempting to stop 'ora.cssd' on 'ora12casm'
CRS-2677: Stop of 'ora.cssd' on 'ora12casm' succeeded
CRS-2793: Shutdown of Oracle High Availability Services-managed resources on 'ora12casm' has completed
```

Notice that on shutdown the services are stopped.